



A 'Tower' of Giraffe on the outer slopes of the Ngorongoro Crater by Tim S. Geiss

## TWIGA SAFARI

### 9 Day Road Safari

Tours operate daily with two people minimum  
(based on availability)

Highlights: Two World Heritage Sites, flora, fauna, scenery and more wildlife.

#### Tanzania Safari Plan

1. ARUSHA
2. LAKE MANYARA NP
3. SERENGETI NP
4. SERENGETI NP
5. SERENGETI NP
6. NGORONGORO CRATER
7. NGORONGORO CRATER
8. TARANGIRE NP
9. ARUSHA



The Twiga Safari takes you through the four top parks in Tanzania with our top English speaking driver/ guides. Using four-wheel-drive safari vehicles throughout you will have a tantalizing taste of the best the tour travels at a comfortable pace allowing you plenty of time for exploration. Returning to Arusha at noon permits travelers to easily extend to southern Tanzania or Zanzibar.

**Twiga means giraffe in Swahili**

### Day 1: Arrival in Arusha, Tanzania

KARIBU TANZANIA! Welcome to Tanzania!

Arrive Kilimanjaro International Airport (JRO) in Arusha, Tanzania. Airport Meet and Greet and then transfer to Arusha Hotel for overnight.

### Day 2: Arusha – Lake Manyara NP

Your morning will be at leisure. After lunch you will depart south through the Great Rift Valley. After you ascend the escarpment you will overnight at your lodge on top with views across the valley below or in an area Farm House. *(BLD)*

### Day 3: Lake Manyara NP – Serengeti NP

Morning game drive in Lake Manyara National Park famous for its tree climbing lions. This small park is diverse with five vegetation zones. The soda lake is a draw to over 400 species of birds including the greater and lesser flamingoes. Lunch will be at your lodge before continuing on to Serengeti National Park. The drive leading up to the park entrance at Naabi Hill gives you an idea where the park gets its name of Serengeti - Maasai for 'endless plains'. After check in formalities here, you will continue with the game drive en-route to your lodge. Arrive in the late afternoon and overnight at your Serengeti lodge. *(BLD)*

### Day 4: Serengeti NP

*Optional* A Sunrise Hot Air Balloon Safari. Enjoy more exploration of this great park possibly visiting one of the many dazzling Kopjes (rocky outcrops) scattered throughout the area. Return in the late afternoon and overnight at your Serengeti lodge. *(BLD)*



The meanest of the Big Five – Cape Buffalo by Tim S. Geiss

### Day 5: Serengeti NP

The Serengeti is full of awe-inspiring landscapes from the plains, to the acacia forests, to the hills in the central region and the Kopjes located throughout. Add that to the abundant wildlife and you will see why it is animal paradise. You will spend the entire day in it looking for game including the many prides of lions that live throughout the park. Overnight at your Serengeti lodge. *(BLD)*

### Day 6: Serengeti NP - Ngorongoro Crater

A morning game drive in animal paradise. Millions of animals may be seen here during the migration seasons. Taking a picnic lunch, you will travel through the Ngorongoro Conservation Area and on up to the rim of 'The Crater'. Arrive at your Ngorongoro lodge or Farm House and overnight. *(BLD)*

### Day 7: Ngorongoro Crater

Game drive 2000 feet down in the Eighth Natural Wonder of the World - Ngorongoro Crater. Year round water keeps a large variety of animals teeming in the area. Picnic lunch will be at one of the hippo pools. Continue your game drive in one of the best places to see black rhinos in Tanzania. The crater elephants also have some of the largest tusks in all of Africa. Overnight at your Ngorongoro lodge or Farm House. *(BLD)*

### Day 8: Ngorongoro Crater - Tarangire NP

Descend back into the Great Rift Valley and over to Tarangire National Park. Large Baobab trees are a main feature of the park. While over 500 bird species have been recorded here the big cats may be found as well. Overnight at your Tarangire lodge. *(BLD)*



*Male Waterbuck posing in Tarangire by Tim S. Geiss*

### Day 9: Tarangire NP - Arusha

In the morning, game route to the gate. Depending on the season, it's possible to see large herds of elephants throughout the park. Along with many other herbivores they are drawn to the Tarangire River and the Silale Swamp. Leaving the park turn north where you will return to Arusha. Continue on to your Zanzibar extension or transfer to your hotel where there is a day room waiting for you. If you are departing Tanzania you will transfer in the late afternoon to JRO for your evening departure home. *(BL)*

Inclusive meals as indicated:

*B = Breakfast; L = Lunch; D = Dinner*

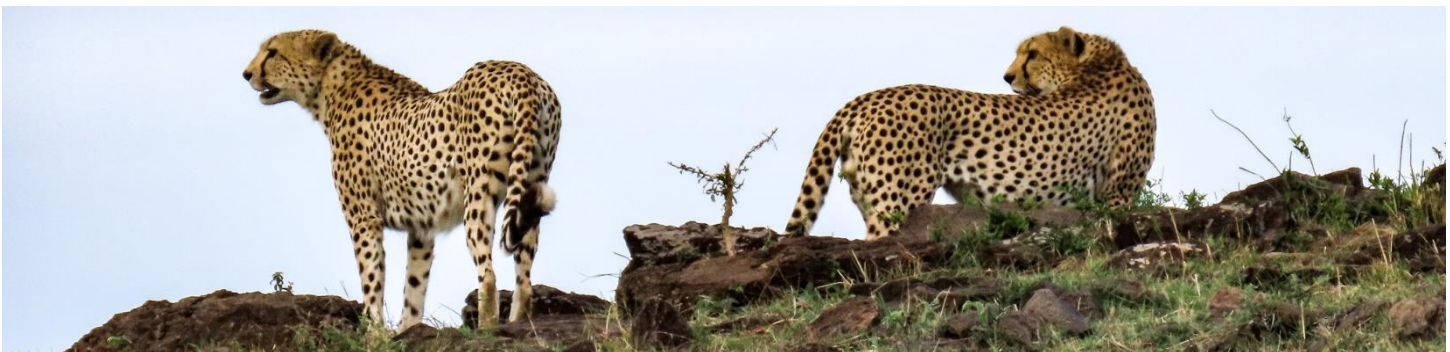


*The Would-Be King by Tim S. Geiss*

<b>BOUTIQUE LODGES</b>			
<b>DAYS OF OPERATION</b>		<b>DAILY -SUBJECT TO AVAILABILITY (2 PAX MINIMUM)</b>	
<b>DAY</b>	<b>DESTINATION</b>	<b>TWIGA BOUTIQUE A</b>	<b>TWIGA BOUTIQUE B</b>
1	ARUSHA	Arusha Coffee Lodge	Kahawa House
2	LAKE MANYARA NP	Kilimamoja Lodge	Ngorongoro Farm House
3	SERENGETI NP	Ole Serai Luxury Camp	Kubu Kubu Tented Camp
4	SERENGETI NP	Ole Serai Luxury Camp	Kubu Kubu Tented Camp
5	SERENGETI NP	Ole Serai Luxury Camp	Kubu Kubu Tented Camp
6	NGORONGORO	Oldeani Mountain Lodge	Ngorongoro Farm House
7	NGORONGORO	Oldeani Mountain Lodge	Ngorongoro Farm House
8	TARANGIRE NP	Tarangire Kuro Treetops Lodge	Maramboi Tented Lodge
9	ARUSHA	Arusha Coffee Lodge	Kahawa House

<b>PRIME LODGES</b>			
<b>DAYS OF OPERATION</b>		<b>DAILY -SUBJECT TO AVAILABILITY (2 PAX MINIMUM)</b>	
<b>DAY</b>	<b>DESTINATION</b>	<b>TWIGA PRIME A</b>	<b>TWIGA PRIME B</b>
1	ARUSHA	Arusha Serena Lodge	Four Points by Sheraton
2	LAKE MANYARA NP	Lake Manyara Serena Lodge	Lake Manyara Serena Lodge
3	SERENGETI NP	Serengeti Serena	Serengeti Sopa Lodge
4	SERENGETI NP	Serengeti Serena	Serengeti Sopa Lodge
5	SERENGETI NP	Serengeti Serena	Serengeti Sopa Lodge
6	NGORONGORO	Ngorongoro Serena	Ngorongoro Sopa Lodge
7	NGORONGORO	Ngorongoro Serena	Ngorongoro Sopa Lodge
8	TARANGIRE NP	Tarangire Sopa	Tarangire Sopa
9	ARUSHA	Arusha Serena Lodge	Four Points by Sheraton

<b>VALUE LODGES</b>			
<b>DAYS OF OPERATION</b>		<b>DAILY -SUBJECT TO AVAILABILITY (2 PAX MINIMUM)</b>	
<b>DAY</b>	<b>DESTINATION</b>	<b>TWIGA VALUE A</b>	<b>TWIGA VALUE B</b>
1	ARUSHA	Mount Meru Hotel	Kahawa House
2	LAKE MANYARA NP	Pamoja Africa Lodge	Tloma Lodge
3	SERENGETI NP	Pamoja Serengeti Luxury Camp	Kati Kati Tented Camp
4	SERENGETI NP	Pamoja Serengeti Luxury Camp	Kati Kati Tented Camp
5	SERENGETI NP	Pamoja Serengeti Luxury Camp	Kati Kati Tented Camp
6	NGORONGORO	Pamoja Africa Lodge	Tloma Lodge
7	NGORONGORO	Pamoja Africa Lodge	Tloma Lodge
8	TARANGIRE NP	Tarangire Safari Lodge	Lake Burunge Tented Lodge
9	ARUSHA	Mount Meru Hotel	Kahawa House



Cheetahs on the lookout for something to chase by Tim S. Geiss